



Mrs. Magdalene Alewine

August 28, 1939 - May 8, 2025

Magdalene Whitley Alewine

August 28, 1939 – May 08, 2025

Who can find a virtuous woman? For her price is far above rubies. (Proverbs 31:10). This scripture describes the wife, mother, grandmother, great-grandmother, sister, aunt, daughter and beloved friend Magdalene Alewine was.

Mary Magdalene Whitley Alewine, 85, of Ranburne, Alabama went home to be with her Lord on Thursday, May 08, 2025. She was born August 28, 1939, and was the daughter of the late Verdis and Annie Whitley, also of Ranburne. The heart of her husband doth safely trust in her, so that he shall have no need of spoil. (Proverbs 31:11). So, it was with Gerald Sidney Alewine when he took Magdalene to be his bride on August 23, 1957. Gerald and Magdalene had three children, Danny, Donna and David.

She seeketh wool, and flax, and worketh willingly with her hands (Proverbs 31:13). Magdalene was a seamstress at Bremen Bowdon Investment Company. After her retirement, Magdalene demonstrated her expertise of knitting and crocheting by creating blankets, sweaters, Christmas ornaments and the list goes on.

She riseth also while it is yet night, and giveth meat to her household (Proverbs 31:15). Magdalene was the epitome of the perfect hostess. Her food was delicious contributions to family meals and church events.

She considereth a field, and buyeth it: with the fruit of her hands she planteth a vineyard (Proverbs 31:16). Gardening was another of Magdalene's many passions. She and Gerald would plant a garden each year and the produce would be canned or frozen and she would make jams and jellies for future meals and gatherings.

Give her of the fruit of her hands; and let her own works praise her in the gates (Proverbs 31:31). Magdalene Alewine was beloved by her family and friends.

In addition to her parents and husband, she was preceded in death by her youngest son David Lee Alewine and her brother Ray Whitley.

Survivors include her son Danny (Celia) of Ranburne, Alabama, her daughter Donna (Scotty) of Gadsden, Alabama. Grandchildren: Chris (Candace) of Bowdon, Georgia, Alan Alewine of Ranburne, Alabama, Joshua (Leonora) of Dallas, Georgia, Lee (Lyndsey) of Southaven, Mississippi, Mary Landers (Mitch) of Atlanta, Georgia and Ashton of Atlanta, Georgia. Great-Grandchildren: Grayson and SJ. Sisters: Betty (Burrell) of Temple, Georgia and Joyce (Roy) of Ranburne, Alabama. She was also adored by many in-laws, cousins, aunts, uncles, nieces and nephews.

Memorial services for Mrs. Alewine will be held on Saturday, May 17th, 2025, at 12:00 p.m. EST at Ranburne First Baptist Church, Ranburne, Alabama. Wade Noles and Mike Pollard will officiate. Mrs. Paula Ogle and Mrs. Mindy Whaley will provide the music.

The family will receive friends at Rainwater Funeral Home on Friday, May 16, 2025, from 5:00 till 7:00 p.m. EST.

Strength and honour are her clothing; and she shall rejoice in time to come. Favour is deceitful, and beauty is vain: but a woman that feareth the LORD, she shall be praised (Proverbs 31: 25,30).

Previous Events

Visitation

MAY **16**. 5:00 PM - 7:00 PM (ET)

Rainwater Funeral Home
317 North Carroll Street
Bowdon, GA 30108
(770) 258-7239
info@rainwaterfuneralhome.com
<https://www.rainwaterfuneralhome.com>

Memorial Service

MAY **17**. 12:00 PM (ET)

Ranburne First Baptist Church
21041 Main Street
Ranburne, AL 36273

Tribute Wall

CW

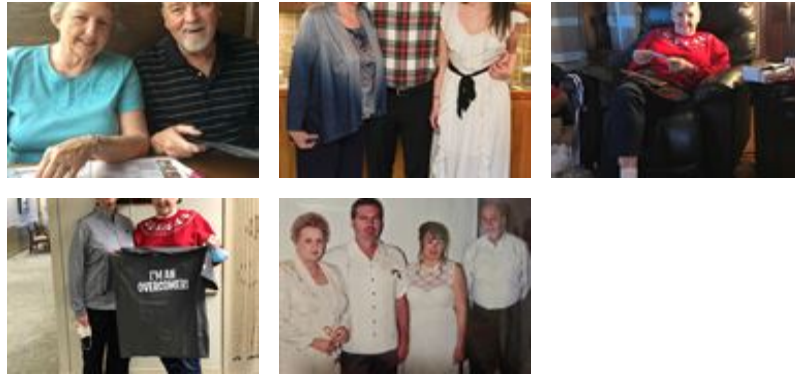
“ Craig Walker lit a candle in memory of Mrs. Magdalene Alewine



Craig Walker - May 18, 2025 at 07:55 AM



“ 56 files added to the album Life Tributes



Rainwater Funeral Home - May 16, 2025 at 04:01 PM

SM

“ Sherrie Musick lit a candle in memory of Mrs. Magdalene Alewine



Sherrie Musick - May 14, 2025 at 12:43 PM

MS

“ *Mike&Jan Stitcher lit a candle in memory of Mrs. Magdalene Alewine*



Mike&Jan Stitcher - May 13, 2025 at 12:26 PM

TH

“ *So sorry for your loss.*



Tina Steve Hembree - May 13, 2025 at 11:37 AM

SP

“ *Susan Patterson lit a candle in memory of Mrs. Magdalene Alewine*



Susan Patterson - May 13, 2025 at 10:01 AM

NP

“ *Nan Phelps lit a candle in memory of Mrs. Magdalene Alewine*



Nan Phelps - May 13, 2025 at 09:22 AM

VW

“ Vickie Welch lit a candle in memory of Mrs. Magdalene Alewine



Vickie Welch - May 13, 2025 at 08:50 AM

TH

“ Tommy & Patty Hardy lit a candle in memory of Mrs. Magdalene Alewine



Tommy & Patty Hardy - May 13, 2025 at 08:43 AM